



2 Banstead Road South, Sutton, SM2 5LF

Offers over £1,300,000



WH WATSON HOMES
Estate Agents

2 Banstead Road South, Sutton, SM2 5LF

Watson Homes are delighted to offer this splendid Detached family home, located In a highly sought after residential road in South Sutton, within easy reach of a selection of excellent primary and secondary schools. The location is also ideal for both Sutton, Carshalton and Carshalton Beeches mainline stations with excellent service into London which are within walking distance making it ideal for commuters. There are also several convenient bus stops in the surrounding area.

The property offers a wealth of accommodation including a 19ft kitchen/breakfast room, a utility room, an en-suite bathroom, five bedrooms, a 130ft rear garden, a garage and ample off street parking. Viewings are highly recommended.

<p>Accommodation</p> <p>UPVC double glazed door to..</p> <p>Entrance porch, quarry tiled step, obscure part glazed wooden front door to..</p> <p>Spacious entrance hall</p> <p>Double panel radiator, coved ceiling, wall mounted thermostat, under stairs storage cupboard, wall mounted alarm system.</p> <p>Lounge</p> <p>Large UPVC double glazed bay window and door to rear aspect, two double panelled radiators, open fireplace, coved ceiling.</p> <p>Dining room</p> <p>UPVC double glazed bay window to front aspect, two double panel radiators, coved ceiling.</p> <p>Kitchen/breakfast room</p> <p>Range of fitted wood units with matching cupboards and drawers below, granite effect rolltop work surfaces with inlaid 1 & 1/2 bowl stainless steel sink and chrome mixer tap, space and plumbing for dishwasher, space for cooker with extractor fan above, space for tall standing fridge/freezer, tiled flooring, double panel radiator, UPVC double glazed window and French doors to rear aspect.</p> <p>Utility room</p> <p>Range of fitted wooden wall units with matching cupboard space below, granite effect roll top work surface with inlaid stainless steel sink and chrome mixer tap, space and plumbing for washing machine and tumble dryer, space for standing fridge/freezer, tiled flooring, single panel radiator, UPVC double glazed window and door to rear aspect, access to garage.</p> <p>Downstairs WC</p> <p>Consisting of pull chain flush WC, wash hand basin with chrome mixer tap and storage cupboards below, single panel radiator, tiled flooring, obscure UPVC double glazed window to front aspect.</p> <p>Stairs to 1st floor landing</p> <p>Obscure UPVC double glazed window to front aspect, double panel radiator, loft access, airing cupboard.</p> <p>Bedroom one</p> <p>UPVC double glazed window to rear aspect, double panel radiator, fitted wardrobes.</p> <p>Ensuite bathroom</p>	<p>Consisting of freestanding clawfoot roll top bathtub with Victorian style chrome mixer tap and shower attachment, tiled cubicle with thermostatic power shower, wash hand basin with chrome mixer tap and storage cupboards below, low level push button flush WC, double panel radiator, tiled walls, UPVC obscure double glazed bay window to front aspect.</p> <p>Bedroom two</p> <p>UPVC double glazed bay window to front aspect, double panel radiator, fitted wardrobes.</p> <p>Bedroom three</p> <p>UPVC double glazed window to rear aspect, double panel radiator, fitted wardrobes.</p> <p>Bedroom four</p> <p>UPVC double glazed window to front aspect, double panel radiator.</p> <p>Bedroom five</p> <p>UPVC double glazed window to rear aspect, double panel radiator, fitted wardrobe and shelving.</p> <p>Bathroom</p> <p>Comprising panel enclosed bath with chrome mixer tap, hand attachment plus thermostatic power shower wash hand basin with chrome mixer tap and storage cupboards below, low level push button flush WC, tiled effect flooring, tiled walls, single panel radiator, shaver point, obscure UPVC double glazed window to rear aspect.</p> <p>Rear garden - approximately 130ft (West facing)</p> <p>Paved patio area leading to large lawn section with mature shrubs bordering, garden shed, outside tap, side access.</p> <p>Garage at side</p> <p>Up/over at front, hardstanding providing further off street parking if desired, wall mounted "Worcester" boiler, large storage cupboard.</p> <p>BUYER'S INFORMATION</p> <p>Under UK law, estate agents are legally required to conduct Anti-Money Laundering (AML) checks on buyers and sellers to comply with regulations. These checks are mandatory, and estate agents can face penalties if they fail to perform them. We use the services of a third party to help conduct these checks thoroughly. As such there is a charge of £36 including vat, per person. Please note, we are unable to issue a memorandum of sale until these checks are complete.</p>
--	--

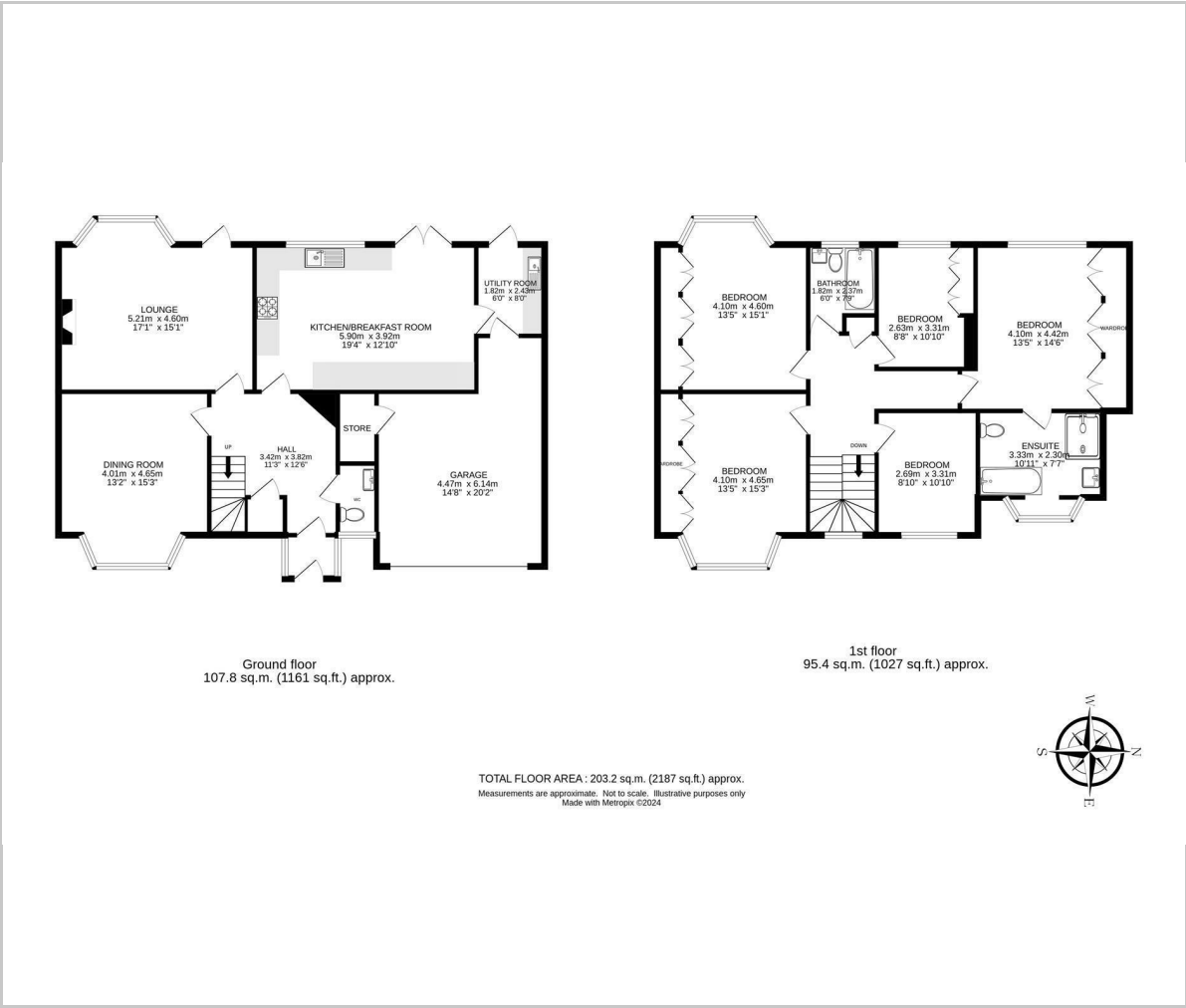








Floor Plan



Viewing

Please contact our Watson Homes Carshalton Beeches Office on 020 4537 3222 if you wish to arrange a viewing appointment for this property or require further information.

These particulars, whilst believed to be accurate are set out as a general outline only for guidance and do not constitute any part of an offer or contract. Intending purchasers should not rely on them as statements of representation of fact, but must satisfy themselves by inspection or otherwise as to their accuracy. No person in this firms employment has the authority to make or give any representation or warranty in respect of the property.

Area Map



Energy Efficiency Graph

